

PureFlow AirDog Universal Fuel Module Upgrade Kit Installation Instructions

This Kit Includes:

Please verify all parts are included before beginning install.

1 set. Bulkhead Fitting, flat seal, washer & lock nut



1 ea. Grommet Adapter



1 ea. 1/2" male quick connect



5 ea. Wire clamps



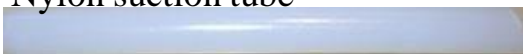
2 ea Tie Straps



1 ea. OE style flexible fuel line



1 ea. Nylon suction tube



1 ea. Bracket, 2 ea. screws and lock nuts



INSTALLING THE PUREFLOW® FUEL MODULE UPGRADE!

To access the fuel tank to install the Up Grade Kit, it is necessary to either drop the fuel tank or lift the bed. Should you choose to pull the bed be sure to disconnect the light wires, filler tube, and any other accessories or components that may be secured to the frame and bed.

CAUTION: If you are unsure of the proper procedure for removing the fuel tank or truck bed from vehicle, consult your vehicle manufacturer's service manuals for detailed instructions.

NOTE: The tank in the pictures are for example only and may not be the same as your tank.

When removing the tank, always remember *Safety First!*



Figure 1



Figure 2

If you choose to remove the bed, properly support the truck bed to prevent serious injury or death.

NOTE: When the original fuel supply line is disconnected, fuel will drain. After the line has drained you may want to seal the end to prevent possible spillage later.

Step 1. Clean top of tank around the module, lock nut and threads so dirt and debris do not contaminate tank. Disconnect electrical plug, supply and return lines. Remove fuel module.



Figure 3



Figure 4

For Fuel Module "A" In-tank style

Note: The sending unit pictured may not be the exact same as the one you have, however installation procedure will be similar on all sending units

Step 2. Drill a 5/8 hole in the top of the Fuel Module (fig 5). Some modules can be drilled at the unused port (fig 6), with other versions it may be necessary to remove some ribs (on top of module only) and grind or sand flat before drilling hole to provide a good sealing surface.



Figure 5



Figure 6

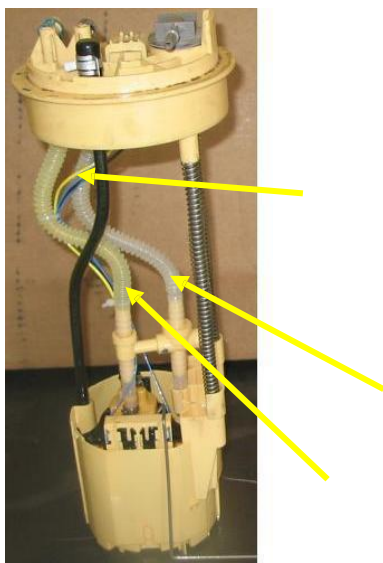
Drill hole
In either spot



Figure 7

Step 3. Removing pump from module.

Cut return line & fuel line from pump and disconnect power wires. Using two or three screw drivers carefully pry pump from its location, remove pump and the components attached to the bottom of it.



An alternate method is to cut the black plastic supports (there are 3) around the top of the pump that are attached to the basket and remove entire assembly, the end result will look like fig 9. This will expose a small rubber valve at bottom of module (fig 8) that will allow fuel to enter module from below (do not remove rubber valve).

Note: Drill a 1/2" hole in the sides of the bucket 2-3" from the bottom.

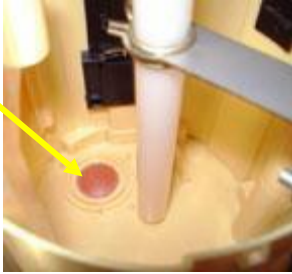


Figure 8

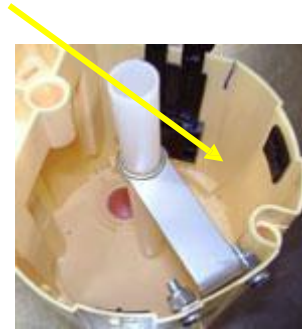


Figure 9

Step 4. Use supplied bracket as a template to mark two holes on the side of module, drill holes with a 3/16 bit being careful when drilling as the plastic can be brittle.

Slip the two wire clamp over the end of bracket and inset Nylon tube into bracket through the two wire clamp (fig 8). Attach bracket with the supplied screws and lock nuts, slide tube down to the bottom of module (fig 9). Connect the convoluted Teflon tube to the hard nylon tube securing with 2 spring clamps 180 degrees apart as in fig 9a.



Figure 9a

Step 5. Install the 1/2" quick connect fitting into the bulkhead fitting (fig 10). Use diesel compatible thread sealant tape on the NPT threads (arrow shows where).

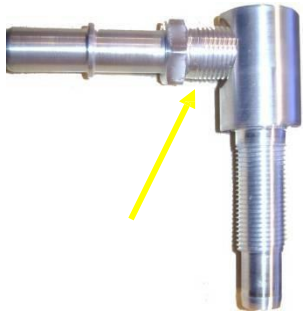


Figure 10

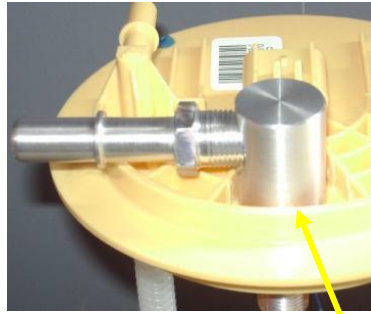


Figure 11



Figure 11A

Step 6. Slide rubber seal onto bulkhead fitting and insert seal side down, into the 5/8" hole.



Figure 12

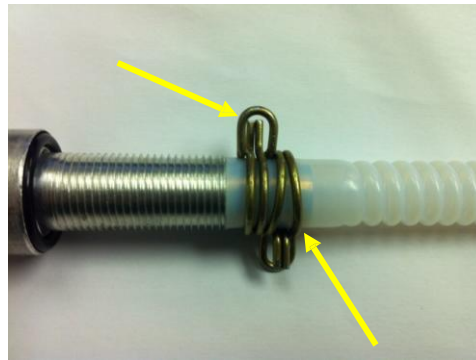


Figure 13

Step 7. Install the washer and lock nut on the bulkhead fitting and tighten down onto the module (fig 12, washer not shown).

Step 8. Install the flex tube with clamps pre installed (fig 13A) on the bulkhead fitting and install 2 spring clamps 180 degrees apart as in fig 13 above. **Be sure to get these tight as to avoid any air leakage when under suction.**

Do not “test fit” the supplied flex tube as they will stretch and not reseal.



Figure 13a

Step 9. Re-install modified module in the tank. Be careful to not bend the sending unit float arm when re-installing, be sure to index the module to the original position to avoid any issues with the fuel level float.

Step 10. Re-install the tank into truck. Do not completely “button up” tank straps until all the new fuel lines as well as original engine return line and electrical plug have been re-connected to the fuel module.

Be sure to re-connect the original engine return line to the module.

INSTALLING THE PUREFLOW® FUEL MODULE UPGRADE FOR FUEL MODULE WITHOUT THE IN-TANK PUMP

Note: The sending unit pictured may not be the exact same as the one you have, however installation procedure will be similar on all sending units

Step 1. Drill two ½” fuel ports in the side of the fuel basket, across from each other, about 3 inches from the bottom to allow more fuel into the basket.(see fig 1)



Figure 1



Figure 2

NOTE: The new ½” pickup tube assembly can be installed in fuel module through the opening with the grommet. **If you do not have a hole already in the module, then you will need to drill a hole in the module and follow the previous instructions for drilling the top of the module.**

Step 2. Install the ½” quick connect fitting into bulkhead fitting. Use diesel compatible thread sealant on the NPT threads.

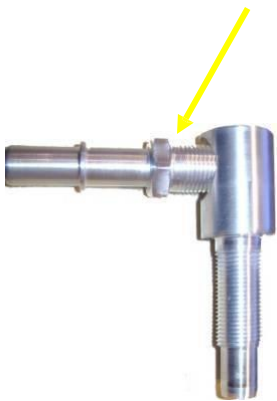


Figure 3



Figure 4

Step 3. Assemble the Pickup Tube as shown. Hold the assembly Next to the fuel module. Adjust the length of the pickup tube so that it is slightly longer than the module. When the pickup tube is installed, the two wire clamp and bracket will hold suction tube against the bottom of the fuel module collection basket.



Step4. Remove the unused tube assembly and install the bulkhead fitting using the special grommet adapter.



Figure 5



Figure 6

Step 5. With the length of the tube assembly set, remove the flex tube from the bulkhead fitting. Insert the bulkhead fitting with the washer, seal side down, through the 5/8" hole in the grommet adapter.



Step 6. Install the washer on the bulkhead fitting first then tighten the *Nyloc* nut.

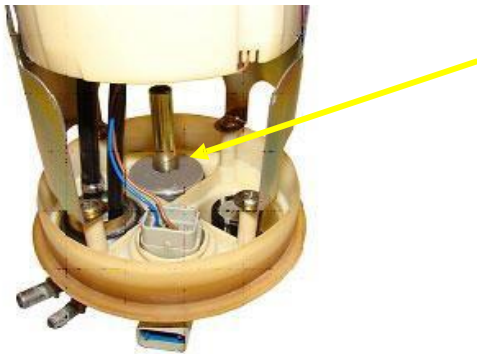


Figure 7



Figure 8

Step 7. When tightening the lock nut on the bulkhead fitting be careful not to damage or break the fuel module.



Figure 9

NOTE: When modifying the fuel module, be sure to make a 1/4" opening in the original suction line for the return fuel to escape into the basket. The original suction tube usually has a check valve to prevent loss of prime.

DO NOT sever the line completely. It also supports the top portion of the fuel module.

Step 8. Slide the soft pickup tube assembly onto the bulkhead fitting and fasten with supplied spring clamps as shown. Next, route soft plastic tube to bottom of module.



Step 9. Remove OE components from bottom of module basket, remove top screen (fig 10) but leave bottom screen intact. Drill out center hole to at least 5/8" to allow hard Nylon tube to pass through hole.



Figure 10

Step 10. Position bracket in module, use as template to drill two holes in a vertical pattern in the side of module basket.



Step 11. Next drill two more holes, one on either side of where the tube will be in bottom of module (fig 11).



Figure 11

Step 12. Slide the two wire clamp over the ring end of bracket (Fig 12), insert Nylon tube with the angle cut pointing to bottom of module (Fig 13), attach convoluted tube with spring clamp and secure bracket to module with supplied screws and lock nuts, make sure Nylon tube is at bottom of module where lower screen is.

Figure 12

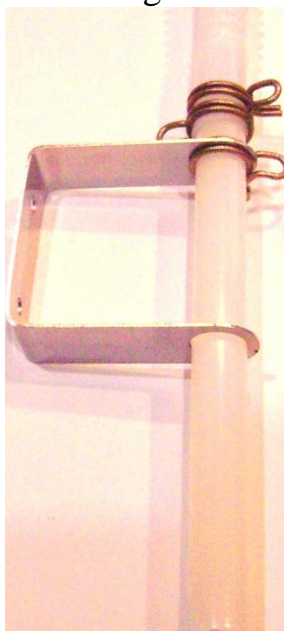
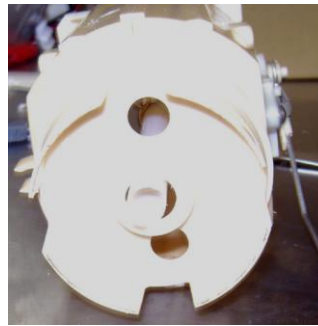


Figure 13



**NOTE: The return line from your AirDog or AirDog II system must be connected to factory suction line on the fuel module for upgrade to work properly.
All return fuel must return to module.**

- Step 13. Re-install the modified fuel module in the fuel tank. Be careful to not bend the sending unit float arm when re-installing the fuel module. Be sure to index the fuel module to the original position to avoid issues with the fuel level float.
- Step 14. Re-install the fuel tank in the truck. Do not completely “button up” the tank straps until all of the new fuel lines as well as the original engine return line and electrical connector have been re-connected to their respective fittings on the fuel module.

Be sure to re-connect the original engine return line to the module.

End result:

You should have a new suction tube that goes all the way down to the bottom of the sending unit, be sure to drill holes where instructed in order to pull a sufficient amount of fuel into the module.

The stock suction/supply fitting on the top of the sending unit will now act as the return for the AirDog system, the new bulkhead fitting and suction tube will be for the AirDog suction line and then factory return line will be reconnected back to the sending unit in its factory position.

Fuel in – Suction from tank

Tank – Return from AirDog to tank

Engine – Fuel out from Airdog to Engine.

